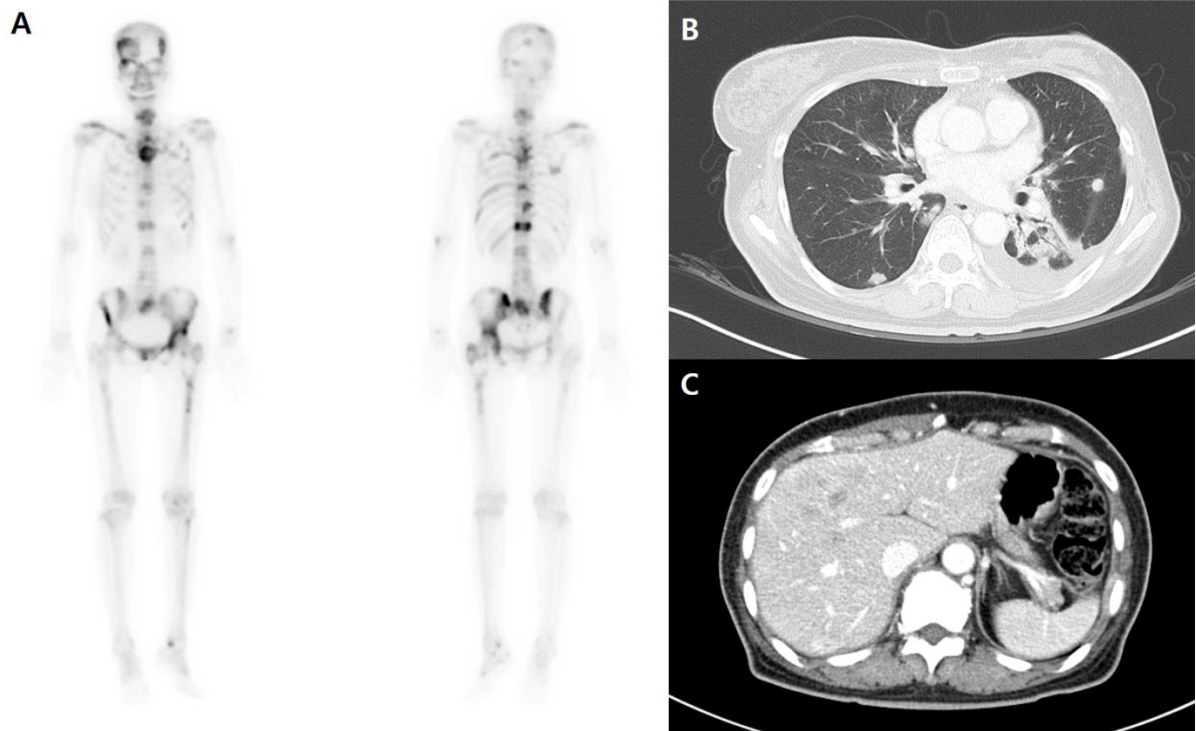


SUPPLEMENTARY INFORMATION

Circulating Tumor DNA in a Breast Cancer Patient's Plasma Represents Driver Alterations in the Tumor Tissue

**Jieun Lee^{1,2§}, Sung-Min Cho^{3§}, Min Sung Kim⁴, Sug Hyung Lee^{4,5},
Yeun-Jun Chung^{3,6,7}, Seung-Hyun Jung^{5*}**

¹Division of Medical Oncology, Department of Internal Medicine, Seoul St. Mary's Hospital, Seoul 06591, Korea, ²Cancer Research Institute, College of Medicine, The Catholic University of Korea, Seoul 06591, Korea, ³Integrated Research Center for Genome Polymorphism, College of Medicine, The Catholic University of Korea, Seoul 06591, Korea, ⁴Department of Pathology, College of Medicine, The Catholic University of Korea, Seoul 06591, Korea, ⁵Cancer Evolution Research Center, College of Medicine, The Catholic University of Korea, Seoul 06591, Korea, ⁶Department of Microbiology, College of Medicine, The Catholic University of Korea, Seoul 06591, Korea, ⁷Precision Medicine Research Center, College of Medicine, The Catholic University of Korea, Seoul 06591, Korea



Supplementary Fig. 2. Disease status at the time of whole exome sequencing for breast cancer. Progression of bone metastases involving whole spine, both femur shaft and pelvic bone was detected by bone scan (A). Chest computed tomography (CT) scan shows progressive lung metastases (B) and abdomen CT scan shows progression of liver metastases (C).