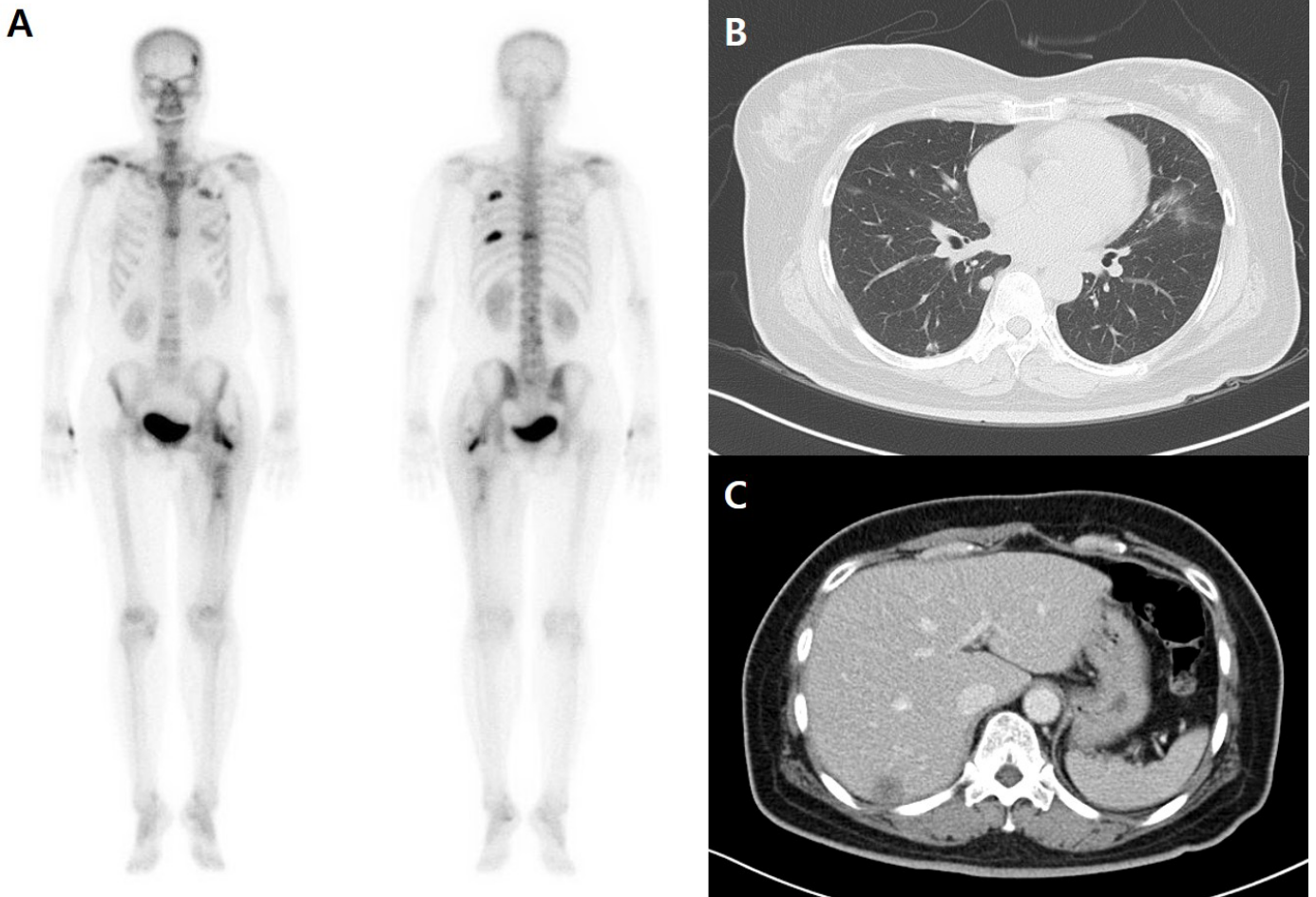


## SUPPLEMENTARY INFORMATION

### **Circulating Tumor DNA in a Breast Cancer Patient's Plasma Represents Driver Alterations in the Tumor Tissue**

**Jieun Lee<sup>1,2§</sup>, Sung-Min Cho<sup>3§</sup>, Min Sung Kim<sup>4</sup>, Sug Hyung Lee<sup>4,5</sup>,  
Yeun-Jun Chung<sup>3,6,7</sup>, Seung-Hyun Jung<sup>5\*</sup>**

<sup>1</sup>Division of Medical Oncology, Department of Internal Medicine, Seoul St. Mary's Hospital, Seoul 06591, Korea, <sup>2</sup>Cancer Research Institute, College of Medicine, The Catholic University of Korea, Seoul 06591, Korea, <sup>3</sup>Integrated Research Center for Genome Polymorphism, College of Medicine, The Catholic University of Korea, Seoul 06591, Korea, <sup>4</sup>Department of Pathology, College of Medicine, The Catholic University of Korea, Seoul 06591, Korea, <sup>5</sup>Cancer Evolution Research Center, College of Medicine, The Catholic University of Korea, Seoul 06591, Korea, <sup>6</sup>Department of Microbiology, College of Medicine, The Catholic University of Korea, Seoul 06591, Korea, <sup>7</sup>Precision Medicine Research Center, College of Medicine, The Catholic University of Korea, Seoul 06591, Korea



**Supplementary Fig. 1.** Disease status at the time of cancer recurrence. Bone scan shows multiple bone metastases involving spine, sacrum and rib (A). Chest computed tomography (CT) scan shows multiple lung metastases (B), and abdomen CT scan reveals liver metastasis (C).