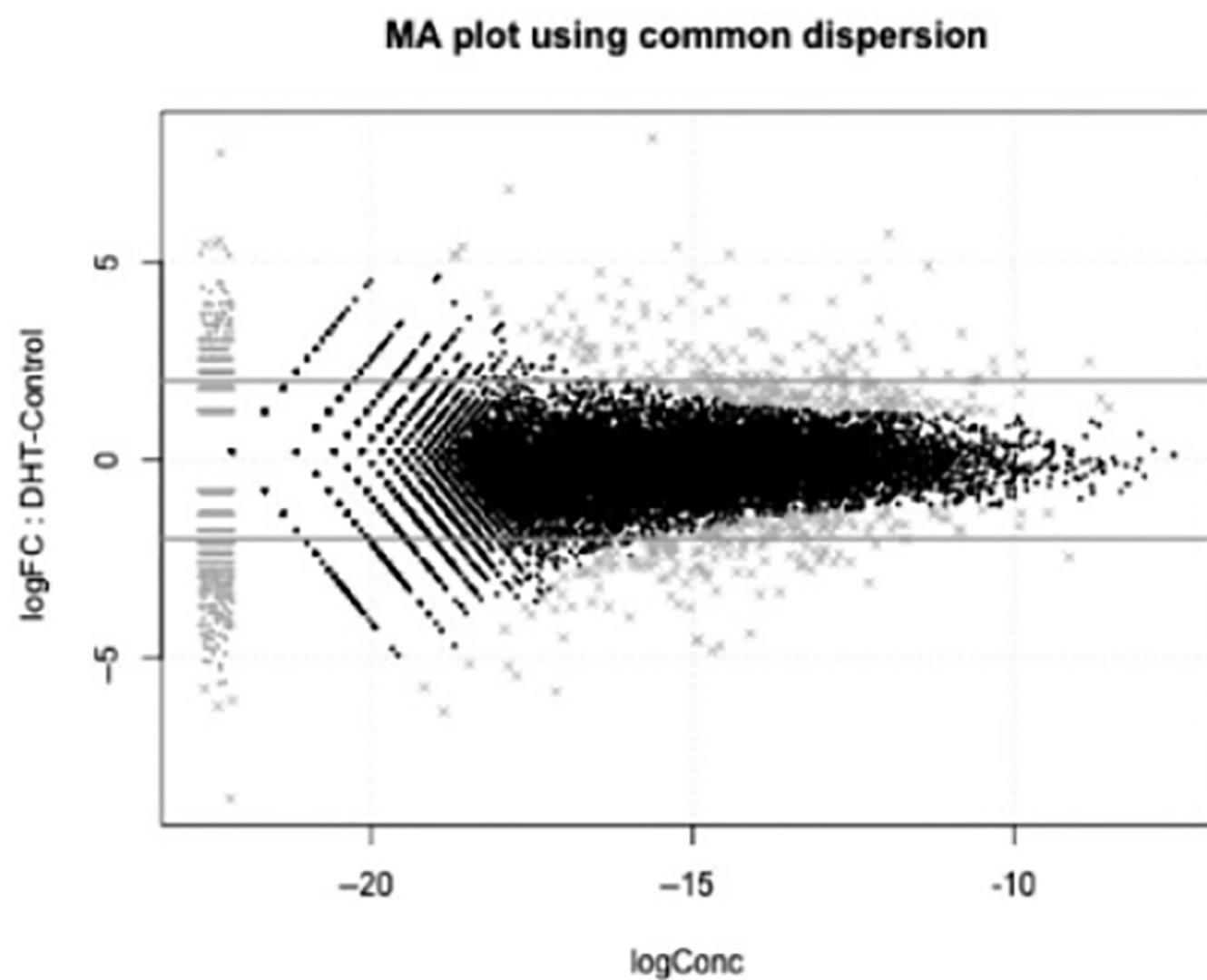


Click "Ok" to move to next step



PARAMETERS

SAVE >

CANCEL

edgeR: differential expression between groups of replicates

edgeR is a Bioconductor software package for examining differential expression of replicated count data. An overdispersed Poisson model is used to account for both biological and technical variability. Empirical Bayes methods are used to moderate the degree of overdispersion across transcripts, improving the reliability of inference. The methodology can be used even with the most minimal levels